

# VESPERGYLE MITTENS

by Elinor Brown

<http://exercisebeforeknitting.com>

[elinor@knitlawrence.org](mailto:elinor@knitlawrence.org)



*I knit these mittens for Julia Vesper of Knitterly Things (<http://www.knitterlythings.com/blog/>) for a friendly mitten swap. They can be easily sized up or down by changing the needle size and adding or omitting a repeat before the mitten top shaping. Although the charts should explain everything, please read through the entire pattern before beginning, as the text provides some important details about increases and decreases.*

## **Finished Measurements:**

8" around, 8" from base of palm to tip, thumb sized to fit hand

## **Materials:**

Harrisville New England Shetland (100% wool; 197 yd [180 m]; 50 g): 1 skein (MC) and 1 skein contrast color (CC)

US 1 1/2 needles or size required to obtain gauge

Small amount of waste yarn

tapestry needle

## **Gauge:**

9.75 stitches and 12 rows per inch

## **Abbreviations:**

K knit  
P purl  
M1 make one  
Sl slip  
Tog together  
Pssso pass slipped stitch over  
CO cast on

**Cuff:**

CO 72 stitches.

Setup row: Knit 1 in MC, \*k2 in CC, k2 in MC; repeat from \*, k2 CC, k1 in MC.

From this point on, the CC color in the cuff will be purled. Work 25 rows of cuff chart.

Work first row of main chart, increasing three stitches evenly on each side of the mitten for a total of 78 stitches (39 each side). Be sure that the purled CC color stitches on each edge of the mitten line up exactly with the edge stitches on the main chart. There should be no color break from cuff to main color at the edges.

The thumb gore begins on the second row of the chart, as indicated by the CC knit stitch outlined in red. Make 1 *before* the first stitch of the row to form the base of the gore. The thumb gore will grow out from between the two vertical CC columns running up the mitten. Be sure to only work thumb shaping on one side of the mitten!

Continue knitting through the chart until there are 29 thumb stitches; place these stitches on waste yarn for later.

Rejoin stitches in the round to continue. It may be necessary to pick up a stitch where the thumb stitches were; do this and knit it together with a neighboring stitch in the next round. 78 stitches total.

Work in the round up the chart to the mitten top shaping.

Decrease round: \*Sl 1 CC, work 1 stitch, pssso, knit to two stitches before the end of chart, k2tog in CC; repeat from \* for other side of the mitten.

Repeat decrease round 18 times (6 stitches remain). Graft top together.

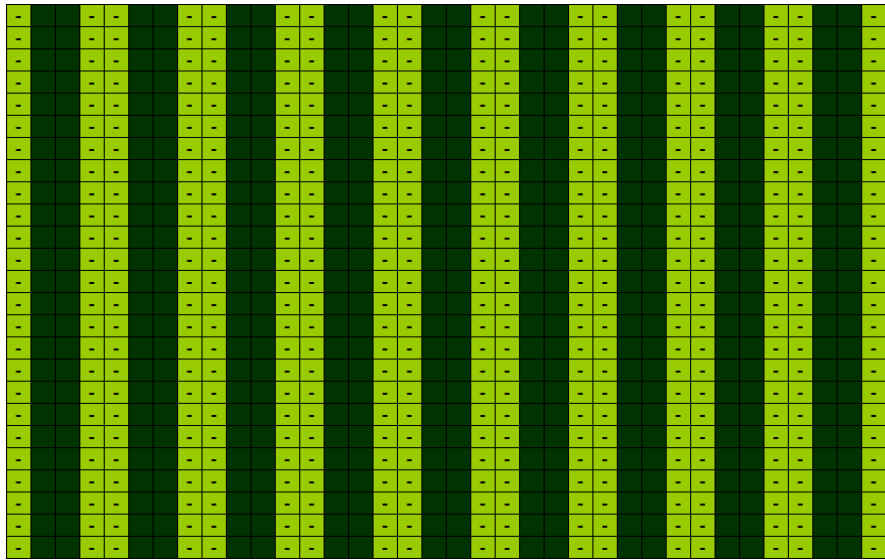
***Thumb***

Return thumb stitches to needles. Pick up one stitch, as indicated by the CC stitch outlined in blue on the chart; join in round.

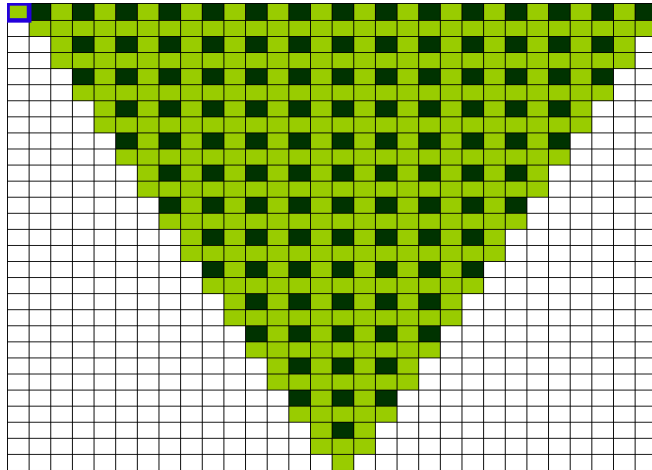
Continue thumb in pattern until 1 1/4" before desired thumb length. Work top shaping according to the chart. All thumb top decreases are k2tog. Thread tapestry needle with the working CC yarn and pull through remaining 6 stitches.

Weave in ends.






Make a second mitten!

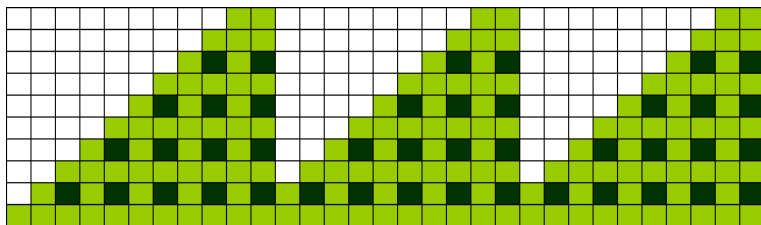


*Mitten cuff*

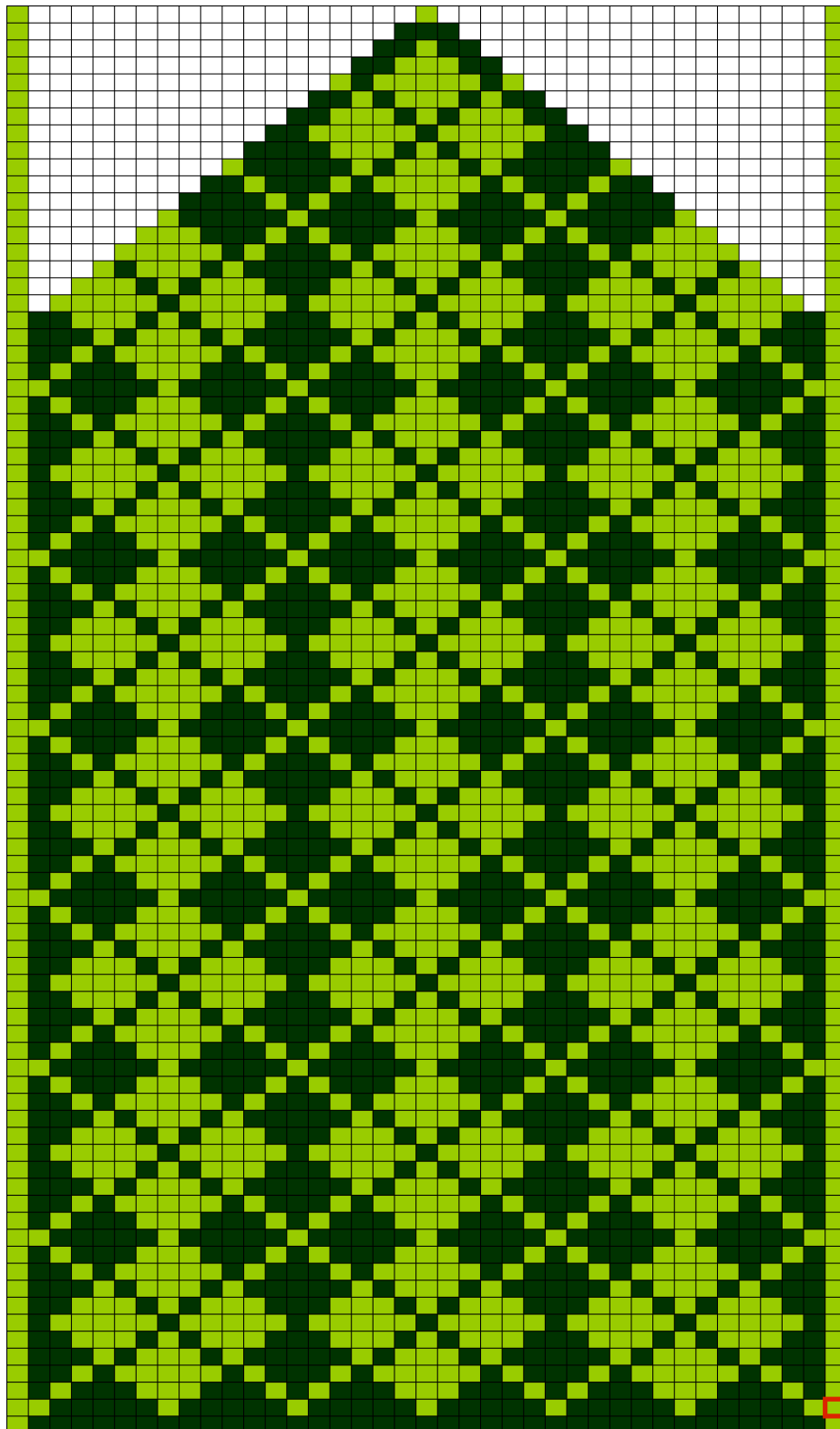


*Thumb gore*

Key	
	Knit 1 MC
	Knit 1 CC
	Purl 1 CC
	K1, M1 in CC
	M1, K1 in CC



*Thumb top*



*Mitten body*