



Winter Sunrise Hat



a knitting pattern by Elinor Brown
elinor@thebrownproject.com
exercisebeforeknitting.com

Difficulty

Intermediate

Skills

Provisional cast-on, knitting in the round, reading and working through a color chart, decreasing, sewing liner to inside of hat.

Sizes

To fit head circumference: 18-20"

Finished measurements

Circumference: 19.25" *unstretched*

Height (bottom edge to the beginning of crown shaping): 6"

NOTE: For longer hats, add pattern repeat(s) before starting the crown shaping.

Gauge

26 stitches and 28 rounds = 4" in stockinette stitch on US 5 (3.75 mm) needles

30 stitches and 30 rounds = 4" in stranded stitch pattern on US 5 (3.75 mm) needles

Yarn

Brown Sheep Nature Spun Sport [100% wool; 184 yd (168 m); 50 g skein]; color: #225S Brick road (MC), 2 skeins; #308S Sunburst gold (CC), 1 skein.

Needles

US 5 (3.75 mm) circular needle, 16" long

1 set of US 5 (3.75 mm) DPNs

Notions

Stitch markers

Waste yarn

Tapestry needle

Abbreviations

BO: Bind off

CC: Contrast color

CO: Cast on

DPNs: double-pointed needles

K: Knit

K2tog: Knit 2 together

MC: Main color

P: Purl

PM: Place marker

SSK: Slip 2 stitches one at a time knitwise, return slipped stitches to the left needle, k2tog through the back loop

Hat

With US 5 (3.75 mm) circular needle, waste yarn and MC, CO 144 stitches using a provisional cast-on, pm, join in round.

Work rounds 1-62 of the color chart.

Break yarn, leaving an 8" tail. Thread a tapestry needle with the yarn tail and draw it through the remaining stitches.

Weave in ends.

Lining

With US 5 (3.75 mm) circular needle and MC, pick up the 143 stitches from the provisional cast-on (there will be one less stitch than the original number cast on), pm, join in round. Remove waste yarn.

Purl one round, decreasing 23 stitches evenly. There will be 120 stitches.

Work in stockinette stitch for 2-3".

BO loosely.

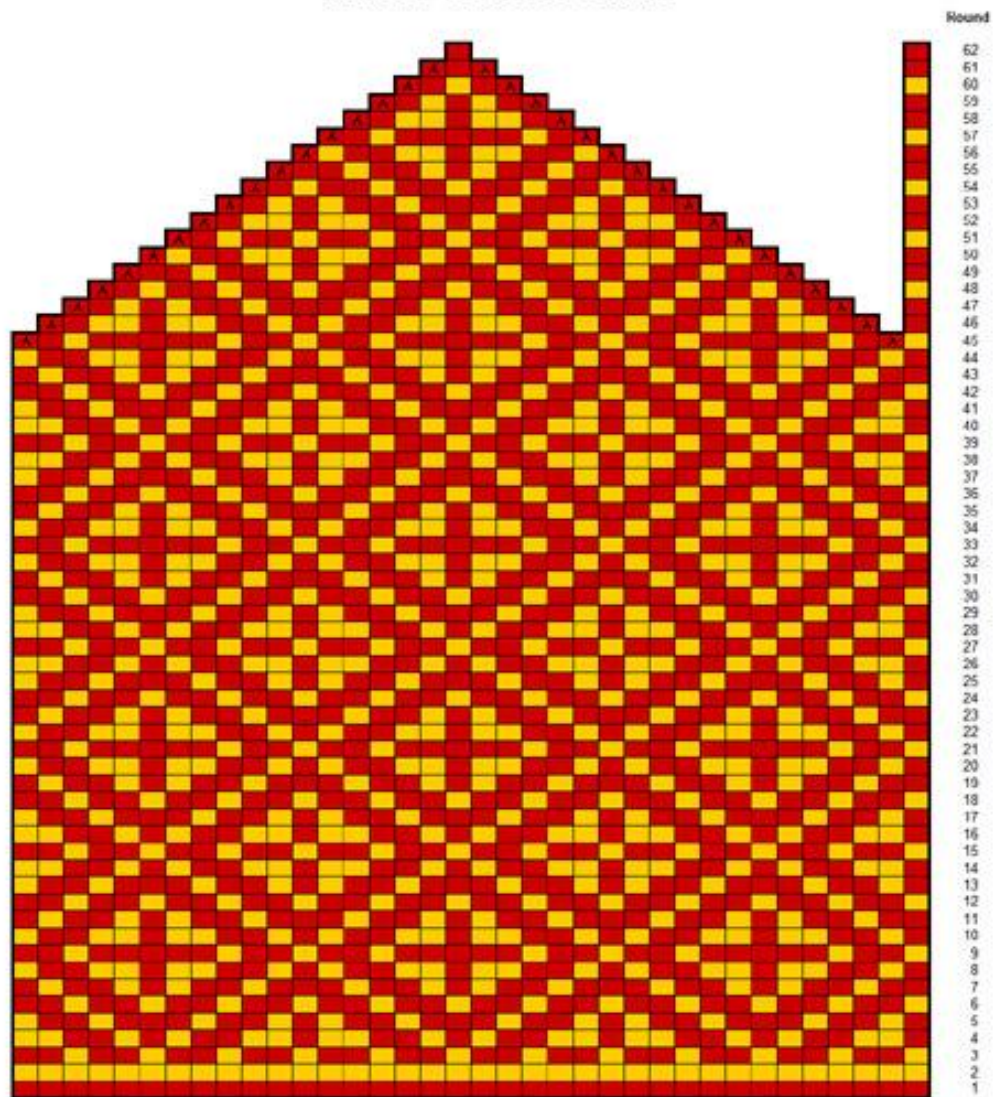
Finishing

With a tapestry needle, sew the lining to the inside of the hat.

More photos of the finished garment available [here](#).

Pattern and all photos are ©2009 Elinor Brown. This pattern is for personal and non-profit use only.

Winter Sunrise Chart



Key	
■	Brick road (MC)
■	Sunburst gold (CC)
λ	ssk
λ	k2tog